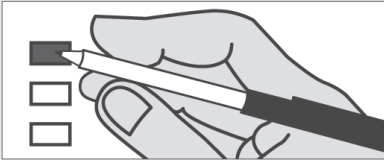


Instructions

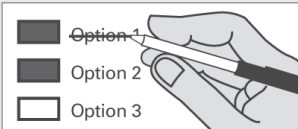
How to vote



Use a dark blue or black ink pen to completely fill in the box to the left of your choice.

Vote for one in each race. If you vote for more than one, no votes will be counted for that race.

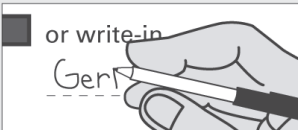
If you make a mistake



Draw a line through the entire measure response or candidate's name.

Then you may make another choice.

Optional write-in



To vote for a candidate not listed for that race, fill in the box to the left of "or write-in" and print the name on the dashed line.

Who donates to campaigns?

View contributors for candidates and measures

Public Disclosure Commission

www.pdc.wa.gov

Toll Free (877) 601-2828

Dike, Drainage, and Irrigation Improvement District No. 12

Commissioner Position 3

6-year term, vote for one

William Ruhland

Lorna Ellestad

or write-in:

End of Ballot

READ: Dike & Drain voters receive 2 ballots. BOTH ballots can be voted and returned in the same secrecy sleeve and envelope.



This page intentionally left blank

Sample Ballot